



2011 Corporate Partner Program

Thank you for your consideration of participation in Sci-Quest's Corporate Partners Program. Our partnerships advance the mission of Sci-Quest to "promote science literacy through interactive exhibits and innovative learning experiences for a diverse and expanding audience." We take pride in associating ourselves with outstanding businesses, individuals, and organizations that are committed to bringing the wonders of science to the children and families of the Tennessee Valley.

Your annual contribution as a Corporate Partner is an investment in our community in the following ways:

- ❖ demonstrating your company's strong commitment to science, mathematics and technology education
- ❖ maintaining more than 100 permanent, interactive exhibits
- ❖ supporting Sci-Quest's mission to serve the entire community, including those limited by financial or geographical barriers
- ❖ providing support to teachers to enhance classroom learning
- ❖ investing in our community's future by encouraging workforce development in STEM careers

Because of your investment, Sci-Quest is committed to providing you with a customized package of benefits that suits your company's individual needs. Among many of the potential benefits are:

- ❖ recognition in *Simply Science* newsletter
- ❖ discounts on rentals, parties, and after-hours events
- ❖ discounts on annual Family Memberships
- ❖ link from website
- ❖ invitation to VIP events
- ❖ sponsorship opportunities for program and fundraising events and exhibits
- ❖ sponsorship opportunities for Title I students to attend Sci-Quest

Thank you, again, for your interest in Sci-Quest's Corporate Partners Program. We believe you will find that participation is a worthy endeavor, and we look forward to an exciting and mutually beneficial relationship!



2011 Corporate Partner Program

Wernher von Braun Society (\$50,000 and greater)

- Prominent acknowledgement on the Donor Wall in the Sci-Quest Exhibit Hall
- Logo acknowledgement and Web site link on the Sci-Quest Homepage and Partner's page
- Logo acknowledgement on the *Simply Science* quarterly e-newsletter (1,200 circulation)
- Up to \$10,000 program and event sponsorships of your choosing (depending on availability) with all accompanying benefits (Mad Scientist Ball, Spooktacular, etc.)
- 500 admission/program scholarships and 20 full day summer camp scholarships for Title I students provided in your company's name
- 5 exhibit sponsorships of your choosing for the calendar year
- One (1) free full-facility rental (available during partnership calendar year)
- Availability of the Immersive Theater for meetings requiring video & projection capabilities and availability of classrooms for meetings and/or workshops (up to five usages during partnership calendar year)
- Corporate Partner **year** designation, offering 25% discount on general admission for your employees and their families for the calendar year
- 25% discount for employees purchasing Sci-Quest Memberships during calendar year
- 100 VIP admission passes for your company
- Invitation to all VIP events at Sci-Quest
- Brand exposure to the more than 90,000 Sci-Quest visitors each year



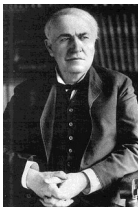
(1912-1977) Wernher von Braun was a German-American rocket physicist, astronautics engineer and space architect, becoming one of the leading figures in the development of rocket technology in Germany and the United States. He served as director of NASA's Marshall Space Flight Center and the chief architect of the Saturn V launch vehicle, the superbooster that propelled the Apollo spacecraft to the Moon.



2011 Corporate Partner Program

Thomas Edison Society (\$30,000 to \$49,999)

- Prominent acknowledgement on the Donor Wall in the Sci-Quest Exhibit Hall
- Logo acknowledgement and Web site link on the Sci-Quest Homepage and Partner's page
- Logo acknowledgement on the *Simply Science* quarterly e-newsletter (1,200 circulation)
- Up to \$7,500 program and event sponsorships of your choosing (depending on availability) with all accompanying benefits (Mad Scientist Ball, Spooktacular, etc.)
- 250 admission/program scholarships and 10 full day summer camp scholarships for Title I students provided in your company's name
- 4 exhibit sponsorships of your choosing for the calendar year
- One (1) free full-facility rental (available during partnership calendar year)
- Availability of the Immersive Theater for meetings requiring video & projection capabilities and availability of classrooms for meetings and/or workshops (up to four usages during partnership calendar year)
- Corporate Partner Calendar Quarter designation, offering 25% discount on general admission for your employees and their families for the three month period selected
- 25% discount for employees purchasing Sci-Quest Memberships during calendar year
- 50 VIP admission passes for your company
- Invitation to all VIP events at Sci-Quest
- Brand exposure to the more than 90,000 Sci-Quest visitors each year



(1847-1931) Thomas Edison was an Ohio-born inventor who only attended school for three months, he created devices that transformed society, such as a reliable electric light bulb, the electric generator, phonograph, wireless telegraph, motion-picture projector, and alkaline, iron-nickel batteries.



2011 Corporate Partner Program

Sir Isaac Newton Society (\$15,000 to \$29,999)

- Prominent acknowledgement on the Donor Wall in the Sci-Quest Exhibit Hall
- Logo acknowledgement and website link on the Sci-Quest Homepage and Partner's page
- Logo acknowledgement on the Simply Science quarterly e-newsletter (1,200 circulation)
- Up to \$5,000 program and event sponsorships of your choosing (depending on availability) with all accompanying benefits (Mad Scientist Ball, Spooktacular, etc.)
- 100 admission/program scholarships and 5 full day summer camp scholarships for Title I students provided in your company's name
- 3 exhibit sponsorships of your choosing for the calendar year
- One (1) free full-facility rental (available during partnership calendar year)
- Availability of the Immersive Theater for meetings requiring video & projection capabilities and availability of classrooms for meetings and/or workshops (up to three usages during partnership calendar year)
- Corporate Partner Month designation, offering 25% discount on general admission for your employees and their families for the month selected
- 25% discount for employees purchasing Sci-Quest Memberships during calendar year
- Invitation to all VIP events at Sci-Quest
- 25 VIP passes for your company
- Brand exposure to the more than 90,000 Sci-Quest visitors each year



(1642-1727) Sir Isaac Newton was a British scientist famous for many revolutionary discoveries. He worked out the basic laws of motion and gravity. He also showed that sunlight is made up of all the colors of the rainbow. He invented the branch of mathematics called calculus, but he kept this discovery quiet. Soon after, a German philosopher and mathematician named Gottfried von Leibniz (1646-1716) also worked out a system of calculus, and made it widely known.



2011 Corporate Partner Program

Marie Curie Society (\$10,000 - \$14,999)

- Acknowledgement on the Donor Wall in the Sci-Quest Exhibit Hall
- Logo acknowledgement and website link on the Sci-Quest Partner's page
- Logo acknowledgement on the *Simply Science* quarterly e-newsletter (1,200 circulation)
- Up to \$2,500 program and event sponsorships of your choosing (depending on availability) with all accompanying benefits (Mad Scientist Ball, Spooktacular, etc.)
- 100 admission/program scholarships for Title I students provided in your company's name
- 2 exhibit sponsorships of your choosing for the calendar year
- 50% discount on a full facility rental during the year
- Availability of the Immersive Theater for meetings requiring video & projection capabilities and availability of classrooms for meetings and/or workshops (up to two usages during partnership calendar year)
- Corporate Partner Month designation, offering 25% discount on general admission for your employees and their families for the one month of your choosing
- Invitation to all VIP events
- 15 VIP passes for your company
- Brand exposure to the more than 90,000 Sci-Quest visitors each year
- Investment in education and in future workforce



(1867-1934) Marie Curie was a Polish-French physical chemist known for discovering radium, which is used to treat some diseases. She won the Nobel Prize for chemistry in 1911. She and her husband, Pierre Curie, also won the Nobel Prize for physics in 1903 for their work in radiation.



2011 Corporate Partner Program

Leonardo Da Vinci Society (\$5,000 - \$9,999)

- Acknowledgement on the Donor Wall in the Sci-Quest Exhibit Hall
- Logo acknowledgement and website link on the Sci-Quest Partner's page
- Logo acknowledgement on the *Simply Science* quarterly e-newsletter (1,200 circulation)
- 50 admission/program scholarships for Title I students provided in your company's name
- 1 exhibit sponsorship of your choosing for the calendar year
- 25% discount on a full facility rental during the year
- Availability of the Immersive Theater for meetings requiring video & projection capabilities and availability of classrooms for meetings and/or workshops (one usage during partnership calendar year and 50% off additional usages)
- Corporate Partner Month designation, offering 25% discount on general admission for your employees and their families for the one month of your choosing
- Invitation to all VIP events
- 10 VIP passes for your company
- Brand exposure to the more than 90,000 Sci-Quest visitors each year
- Investment in education and in future workforce



(1452-1519) Leonardo Da Vinci was one of the greatest painters of all times, but is also known as the ultimate Renaissance man because he was perhaps the most widely talented person ever to have lived. He was a painter, sculptor, inventor, military engineer, scientist, botanist and mathematician.



2011 Corporate Partner Program

Rosalind Franklin Society (\$2,500 - \$4,999)

- Acknowledgement on the Donor Wall in the Sci-Quest Exhibit Hall
- Logo acknowledgement and website link on the Sci-Quest Partner's page
- Logo acknowledgement on the *Simply Science* quarterly e-newsletter (1,200 circulation)
- 25 admission/program scholarships for Title I students provided in your company's name
- 1 exhibit sponsorship of your choosing for the calendar year
- Availability of the Immersive Theater for meetings requiring video & projection capabilities and availability of classrooms for meetings and/or workshops (one usage during partnership calendar year and 25% off additional usages)
- Corporate Partner Month designation, offering 25% discount on general admission for your employees and their families for the one month of your choosing
- Invitation to all VIP events
- 5 VIP passes for your company
- Brand exposure to the more than 90,000 Sci-Quest visitors each year
- Investment in education and in future workforce



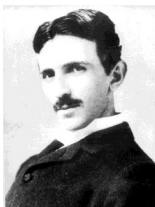
(1920 – 1958) Rosalind Franklin was a British biophysicist, physicist, chemist, biologist and X-ray crystallographer who made important contributions to the understanding of the fine molecular structures of DNA, RNA, viruses, coal and graphite. Franklin is still best known for her work on the X-ray diffraction images of DNA.



2011 Corporate Partner Program

Nikola Tesla Society (\$1,000 - \$2,499)

- Acknowledgement on the Donor Wall in the Sci-Quest Exhibit Hall
- Logo acknowledgement and website link on the Sci-Quest Partner's page
- Logo acknowledgement on the *Simply Science* quarterly e-newsletter (1,200 circulation)
- 10 admission/program scholarships for Title I students provided in your company's name
- Availability of the Immersive Theater for meetings requiring video & projection capabilities and availability of classrooms for meetings and/or workshops at a 25% discount for the year
- Corporate Partner Month designation, offering 25% discount on general admission for your employees and their families for the one month of your choosing
- Invitation to all VIP events
- Brand exposure to the more than 90,000 Sci-Quest visitors each year
- Investment in education and in future workforce



(1856-1943) Nikola Tesla was an Austria-Hungary physicist who emigrated to the U.S. in 1884 pioneered the generation, transmission, and use of alternating current (AC) electricity, which can be transmitted over much greater distances than direct current.